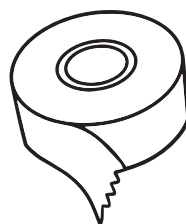


What's inside

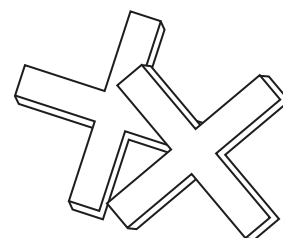
pencil



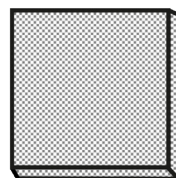
sticker tape



spacing cross



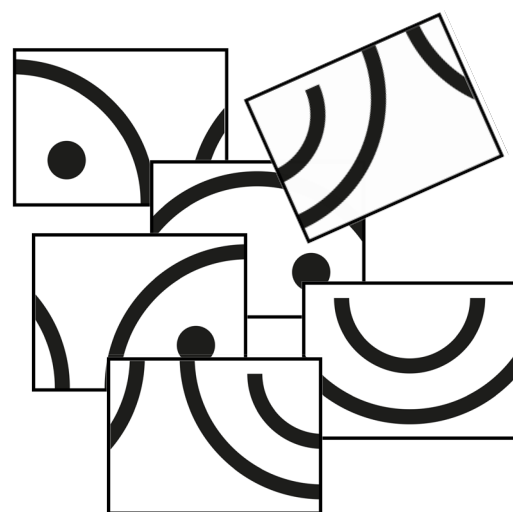
magnets



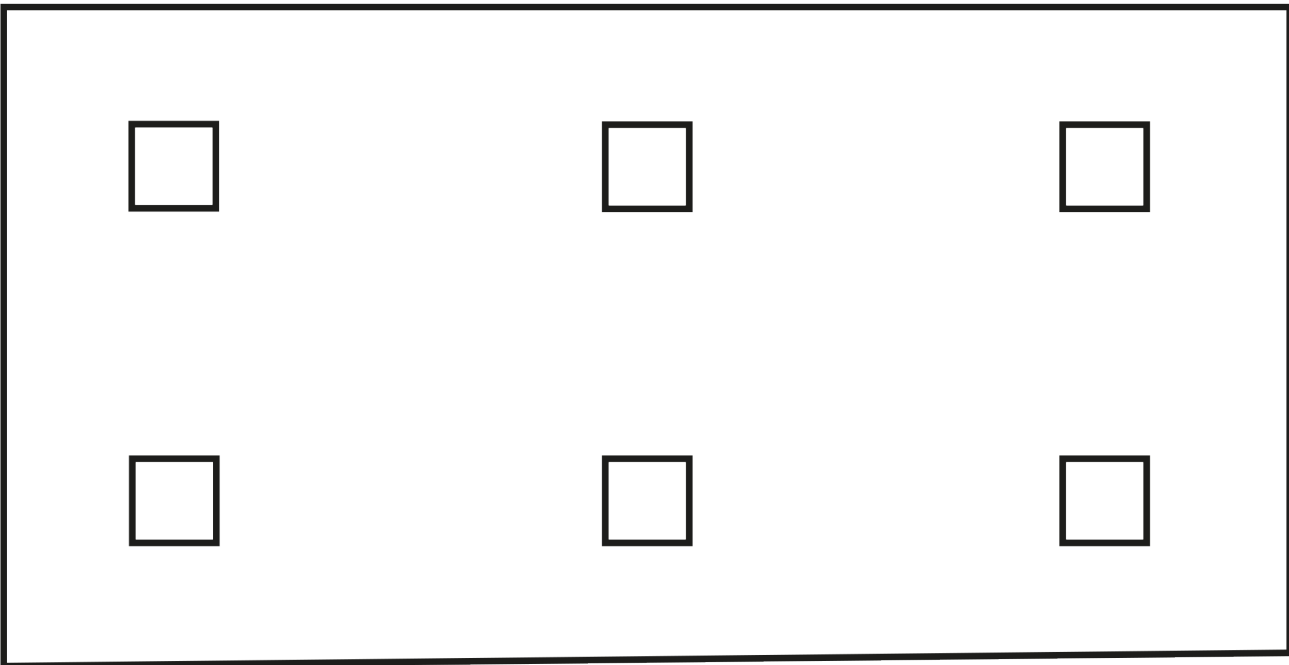
spirit level



Multiplate



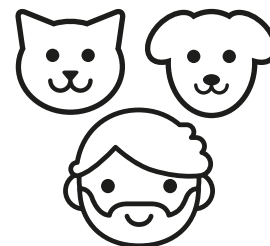
template for hanging magnets



Safety



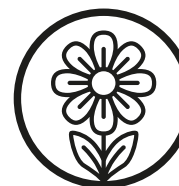
Not suitable for children.



Not tested on animals and human beings in general :)

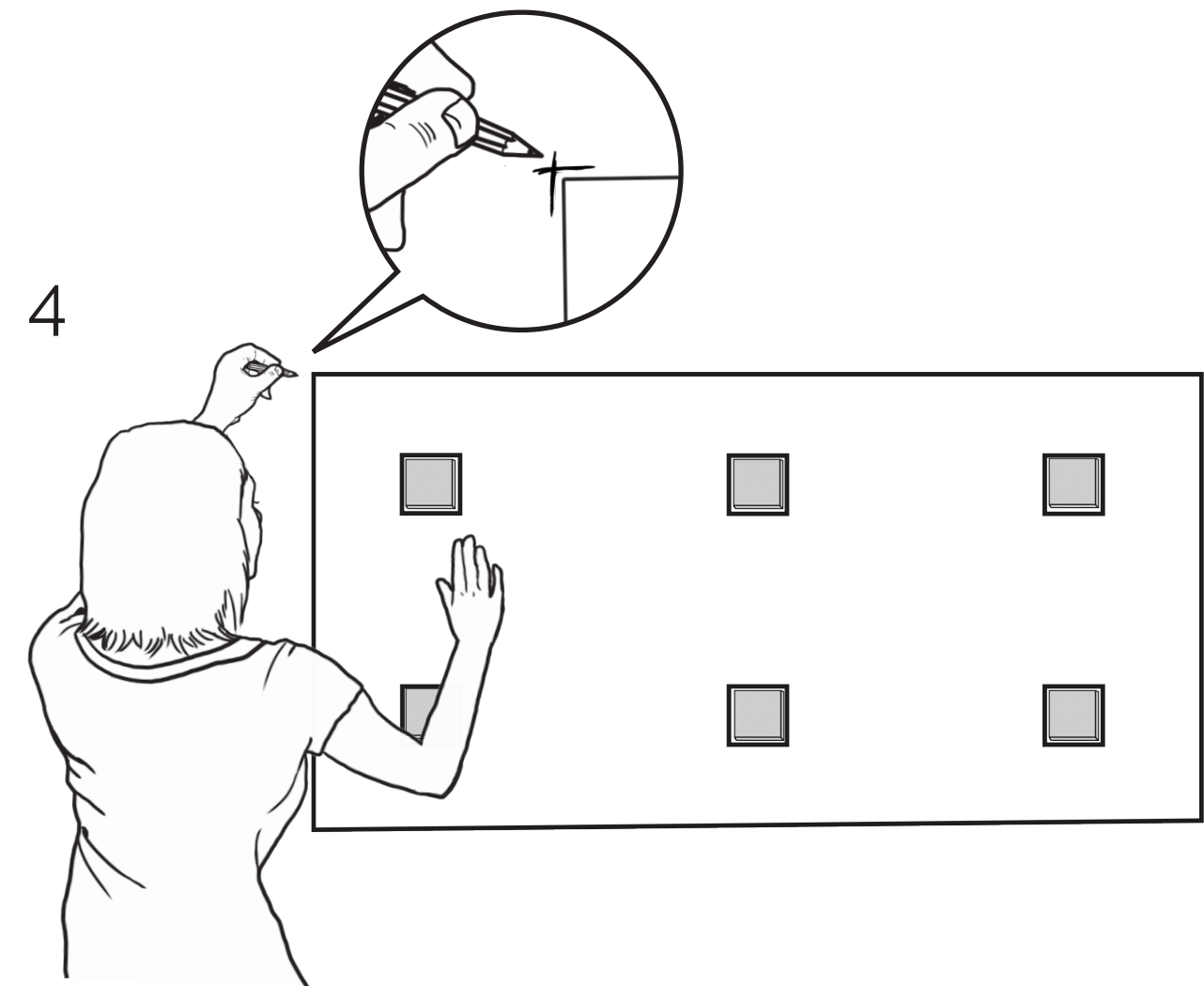
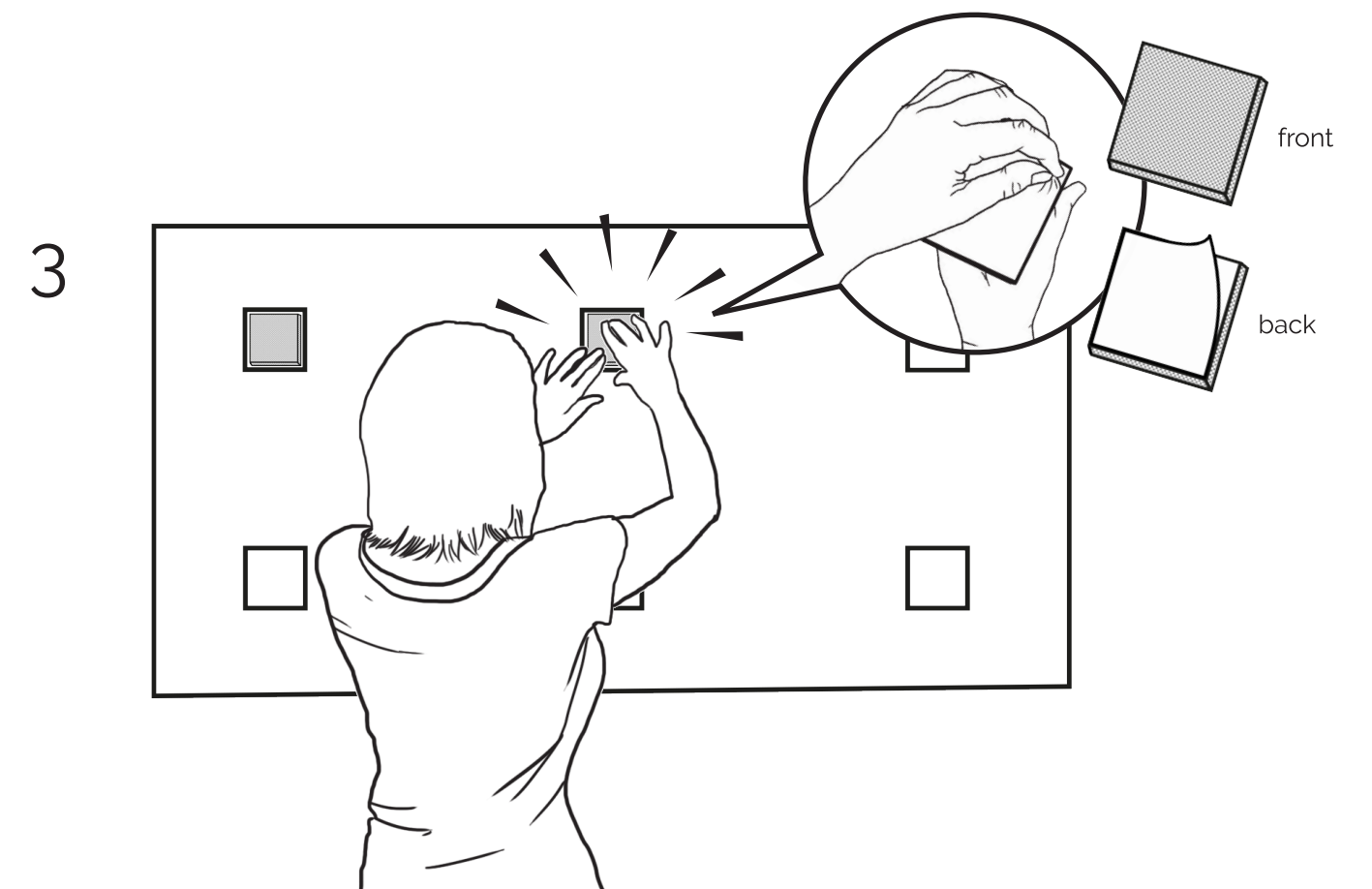
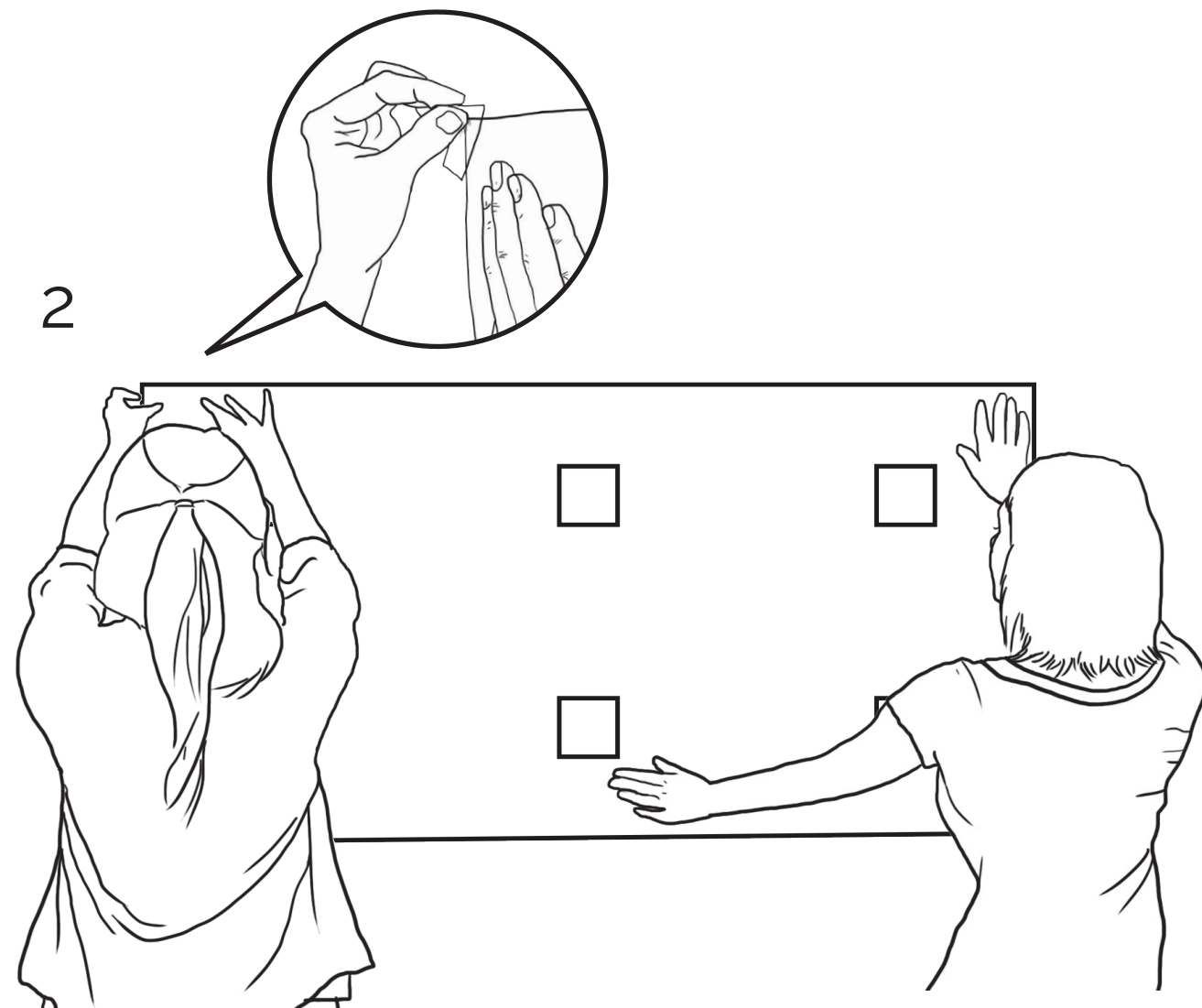
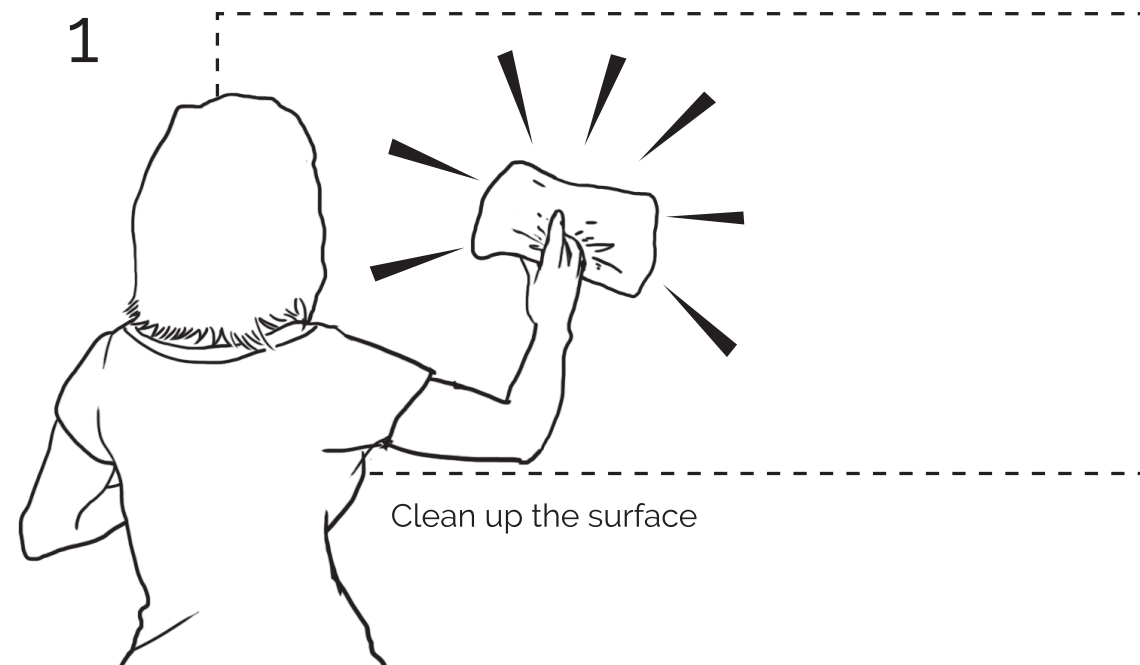


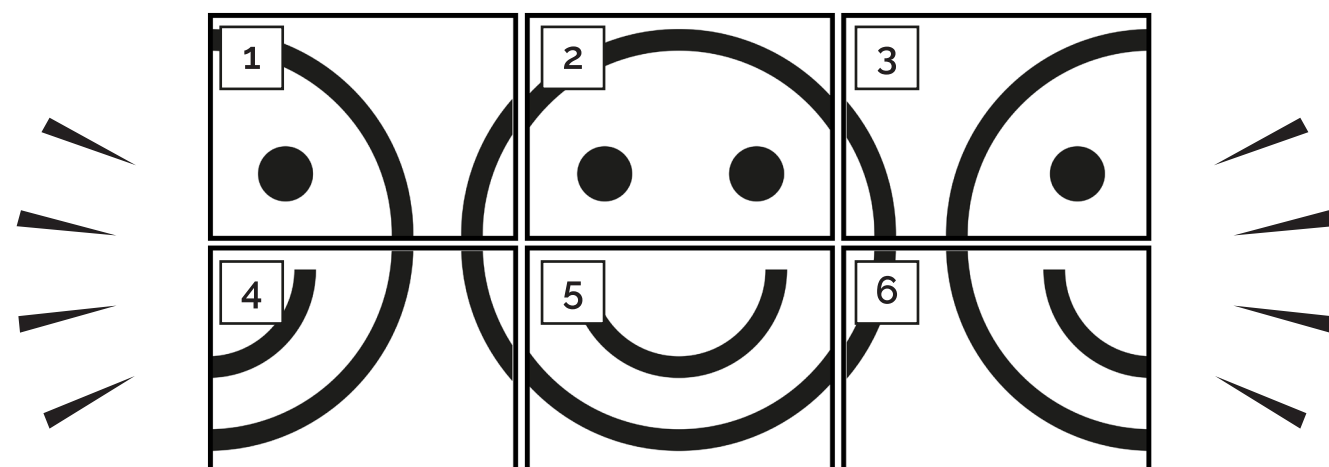
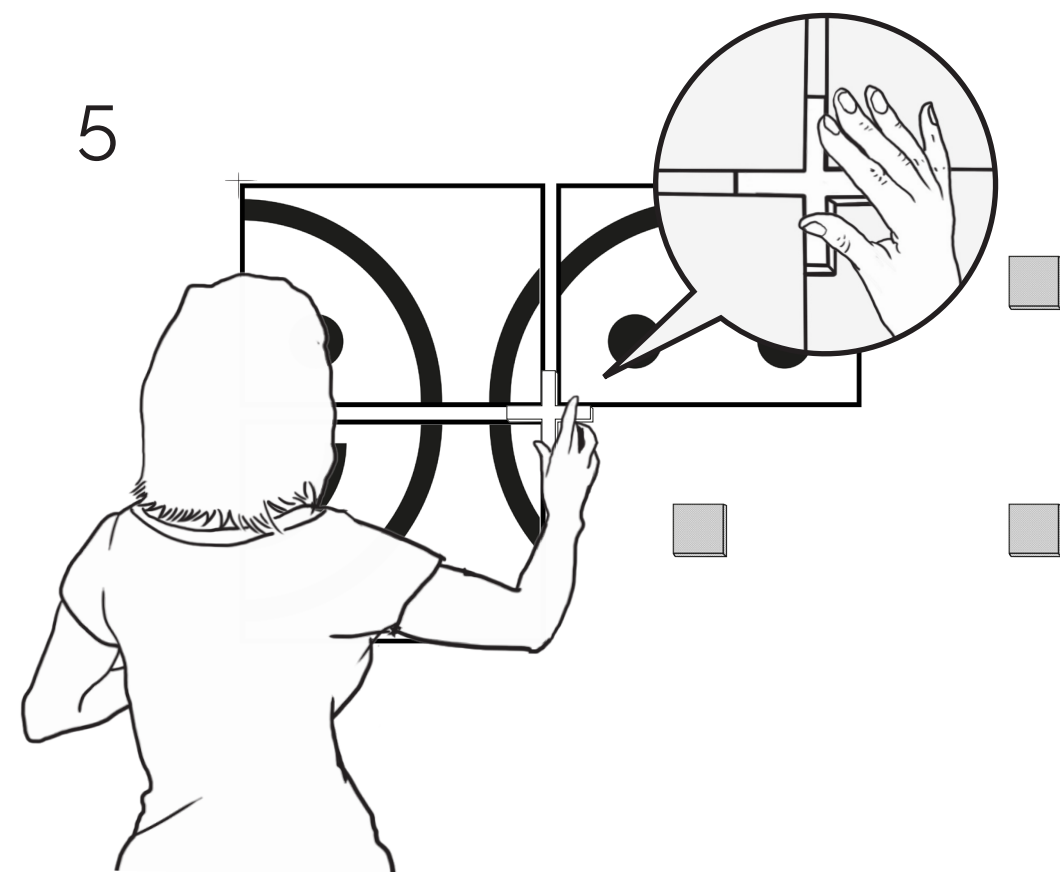
Preferable flat surfaces. Avoid rugged walls. Only if necessary use adhesive gum or nail magnets to the wall.



Prints are designed for decorating purpose only. Other usages are not advisable or recommended but let us know if you come up with other creative ideas :)

How to hang a multiplate





Great work!

You've just hung your Multiplate!
Fast, clean, no power tools!
Now invite your friends and expose them to your
new experience on large size metal prints!

Display yourself!

Share your **Multiplate**
on **Instagram**

#multiplate #displate

In case of any questions, don't hesitate to contact us via mail:
support@displate.com



Find us on:

facebook.com/displate

instagram.com/displate

twitter.com/displate

pinterest.com/displate

displate.com